



# DEEP WATER TOOLING AS

Tooling and spooling





# DEEP WATER TOOLING AS

Tooling and spooling

Deep Water Tooling AS is a Norwegian company developing and manufacturing Subsea Tools. Our speciality are environmental friendly solutions running on water. With a substantial base of expertise from both Salvage and Oil & Gas operations we have put our knowledge into these tools. Enjoy our leaflet with short descriptions of our "shelf ready" tools and don't hesitate to contact us further if questions arise or if you enquire a tailor-made solution.

## DWT excavating Tools

DWTs excavating tools are specially made to be operated with sea water down to 6000m. all tools are delivered with DWS Water tooling Pack™ which gives you a complete plug and play system for any Work class ROV.

It is developed to be an environmental friendly and sustainable option to oil-based systems where leakage is a common and severe problem. With oil leakage you will have multiple problems at hand. Not only hurting the environment but also the tool itself when water leaks in, damaging both pumps and valves with increased maintenance and repair as a result.

When using the DWT excavating tools you don't have to bring compensators (oil reservoirs) with you and will

therefore have the ability to operate on big depths up to 6000 m.

Deep Water Tooling AS is the first Company to offer this complete package to Subsea Clients all over the world.

The Mobilization is an important part of every project and Deep Water Tooling, as your supplier will naturally offer to provide specialized personnel to take part of this by being on location and guide the crew and users to safely operate and install our tools. Tool technicians to accompany on project is also available. Quote for personnel is separately given upon request depending on location and work scope.

All documentation, certificates and user manuals will be included in package.

- ENVIRONMENTALLY SUSTAINABLE
- LESS DOWNTIME
- KEEPS RISK ASSESSMENTS GREEN
- SIMPLE MOBILIZATION
- COST & TIME EFFICIENT
- ULTRA DEEP OPERATIONS

Deep Water Tooling AS  
Kyrkjebakken 26  
6856 Sogndal, NORWAY

info@dwt.no  
+47 977 60 576  
Org. Nr. 927 001 128



# Water Tooling Pack™

*A complete plug and play set for any work class ROV to run tools on water.*

The set is specially made by DWT and includes a Safety Hot-Stab which has been developed to minimize downtime and leakage. The hot stab will also

auto release if anything would happen to the ROV, which is key when working with big tools.

We even have a four port version which gives you the opportunity to run conventional hydraulic (oil) tools, without coming on deck.

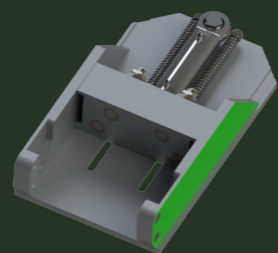
The set includes the DWT Water



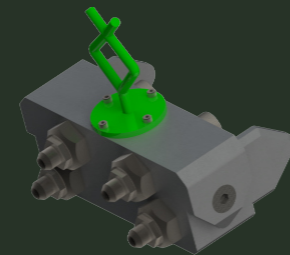
*The Water Tooling Pack accompanying the grabs.*



*DWT Water Valve Pack™ containing dual water high flow valves.*



*Inboard DWT Hot-Stab™*



*Outboard DWT Hot-Stab™ four port*

# MEGA CLAW 6



## Specifications

### Hydraulics

Fluid:	Salt Water
Cylinders:	6x HD Water Gasket
Max Working Pressure:	90-200 Bar
Water flow:	30-120 l/min

### General

Bucket Capacity:	8 m <sup>3</sup>
Weight:	6 ton
Width Fully open:	4920mm
Width Fully closed:	3070mm
Height Fully closed:	3440mm
SWL:	55 ton
Arms:	6



Deep Water Tooling AS  
Kyrkjebakken 26  
6856 Sogndal, NORWAY

info@dwt.no  
+47 977 60 576  
Org. Nr. 927 001 128

Deep Water Tooling AS  
Kyrkjebakken 26  
6856 Sogndal, NORWAY

info@dwt.no  
+47 977 60 576  
Org. Nr. 927 001 128



# MEGA CLAW 3



## Specifications

### Hydraulics

Fluid:	Salt Water
Cylinders:	3x HD Water Gasket
Max Working Pressure:	90-200 Bar
Water flow:	30-120 l/min

### General

Weight:	5 ton
Width Fully open:	4920mm
Width Fully closed:	3070mm
Height Fully closed:	3440mm
SWL:	55 ton
Arms:	3

# DWT BAG 10



## Specifications

### Hydraulics

Fluid:	Salt Water
Cylinders:	4x HD Water Gasket
Max Working Pressure:	90-200 Bar
Water flow:	30-120 l/min

### General

Bucket Capacity:	10 m <sup>3</sup>
Weight:	10 ton
Length Fully open:	5550mm
Width:	2400mm
Height Fully closed:	4250mm
SWL:	50 ton



Deep Water Tooling AS  
Kyrkjebakken 26  
6856 Sogndal, NORWAY

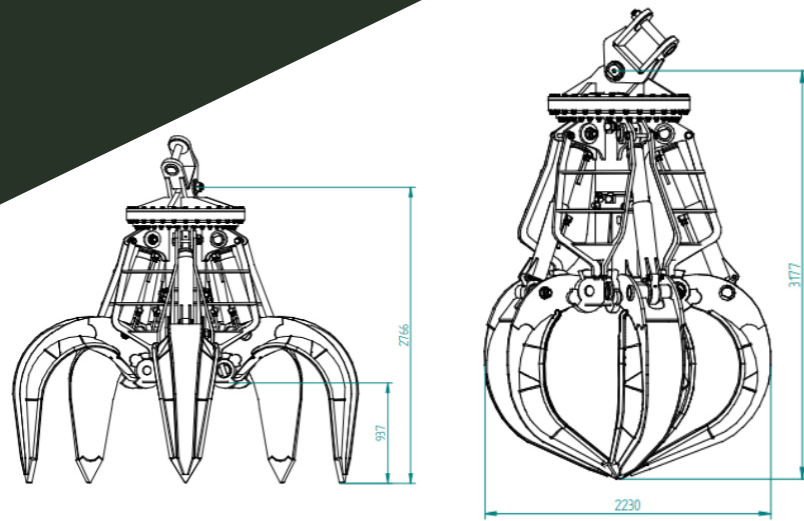
info@dwt.no  
+47 977 60 576  
Org. Nr. 927 001 128

Deep Water Tooling AS  
Kyrkjebakken 26  
6856 Sogndal, NORWAY

info@dwt.no  
+47 977 60 576  
Org. Nr. 927 001 128



# DWT OPG 2.2



## Specifications

### Hydraulics

Fluid:	Salt Water
Cylinders:	5x HD Water Gasket
Max Working Pressure:	90-200 Bar
Water flow:	30-120 l/min

### General

Weight:	4,815 ton
Pay Load:	13,5 ton
Arms	5
Capacity	2200 ltr.
Width fully open:	3326mm
Width fully closed:	2230mm
Height fully open:	2766mm
Height fully closed:	3177mm
Transported Length:	3600mm
Transported Height:	2250mm
Transported Width:	2345mm

# TAG 35 Dala-Gripen

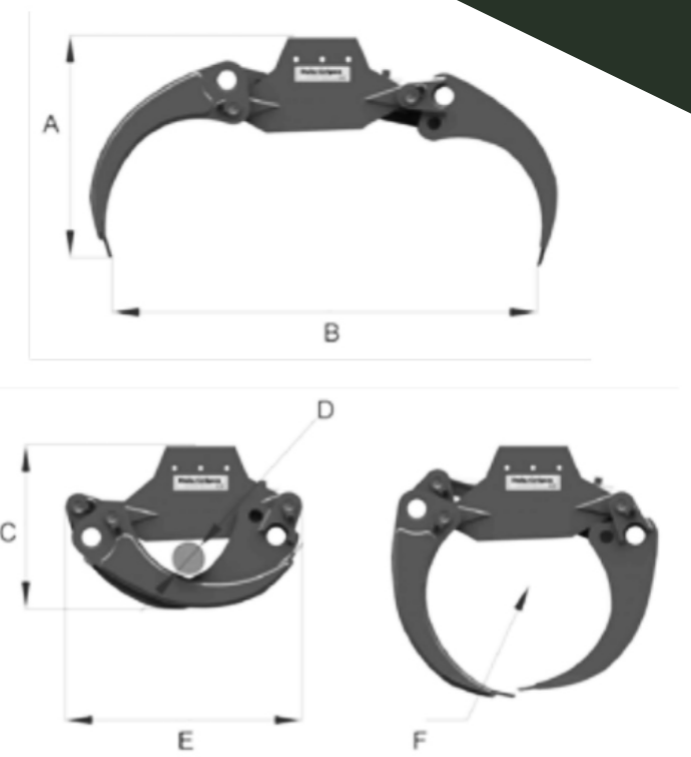
## Specifications

### Hydraulics

Fluid:	Salt Water
Cylinders:	HD Water Gasket
Max Working Pressure:	90-200 Bar
Water flow:	30-120 l/min

### General

Weight:	
Max Opening (B):	1820mm
Gripping Area (F):	0,35m <sup>2</sup>
Width:	485mm
Max width:	495mm
Height Fully Open (A):	770mm
Height Fully closed (C):	610mm
Length when closed (E):	930mm
Max Load:	5 ton
Arms:	2
Minimum Gripping Diameter (D):	125mm



Deep Water Tooling AS  
Kyrkjebakken 26  
6856 Sogndal, NORWAY

info@dwt.no  
+47 977 60 576  
Org. Nr. 927 001 128

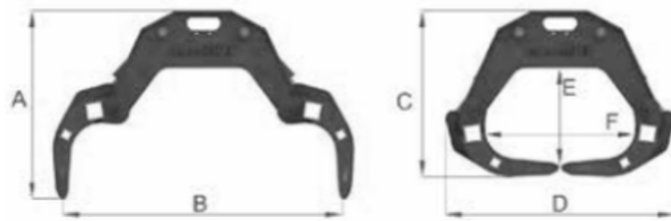
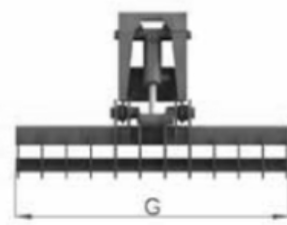
Deep Water Tooling AS  
Kyrkjebakken 26  
6856 Sogndal, NORWAY

info@dwt.no  
+47 977 60 576  
Org. Nr. 927 001 128



# DWT

## TAG 40



### Specifications

#### Hydraulics

Fluid:	Salt Water
Cylinders:	2x HD Water Gasket
Max Working Pressure:	210 Bar
Water flow:	30-80 l/min

#### General

Weight:	175 kg
Pay Load:	5 ton
Cylinder force:	65 kN
Gripping force arms tip:	14 kN
Arms	2
A. Height when opened	710mm
B. Max opening:	1230mm
C. Height when closed:	680mm
D. Length:	1100mm
E. Inside height:	410mm
F. Inside width:	620mm
G. Width:	930mm



*Efficient and good in picking up deep set stones or smaller stones.*



Deep Water Tooling AS  
Kyrkjebakken 26  
6856 Sogndal, NORWAY

info@dwt.no  
+47 977 60 576  
Org. Nr. 927 001 128

Deep Water Tooling AS  
Kyrkjebakken 26  
6856 Sogndal, NORWAY

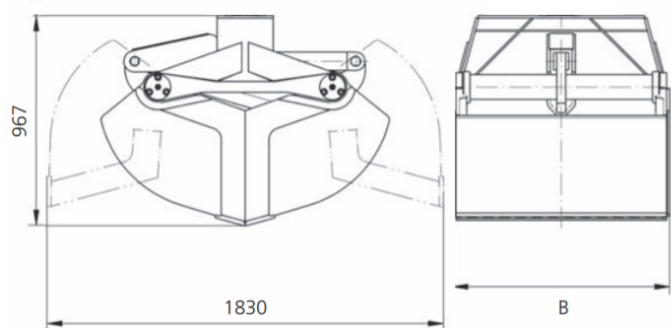
info@dwt.no  
+47 977 60 576  
Org. Nr. 927 001 128



# DWT

## BUG

### 500



## Specifications

### Hydraulics

Fluid:	Salt Water
Cylinders:	HD Water Gasket
Max Working Pressure:	90-200 Bar
Water flow:	30-120 l/min

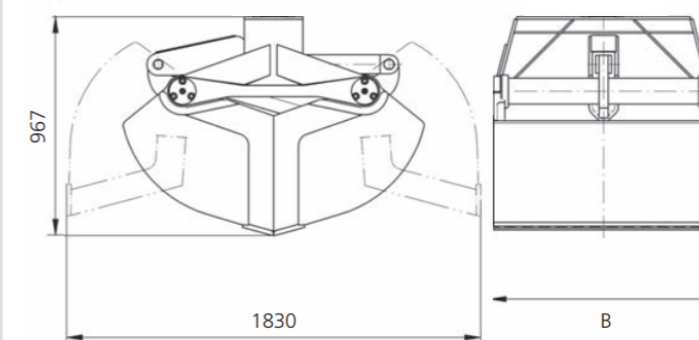
### General

Weight:	0,475 ton
Load Capacity:	3 ton
Volume:	500 litre
Closing Force:	28 kN
Opening Max:	1830mm
Height:	967mm
Width (B):	1000mm

# DWT

## BUG

### 650



## Specifications

### Hydraulics

Fluid:	Salt Water
Cylinders:	HD Water Gasket
Max Working Pressure:	90-200 Bar
Water flow:	30-120 l/min

### General

Weight:	0,515 ton
Load Capacity:	3 ton
Volume:	650 litre
Closing Force:	28 kN
Opening Max:	1830mm
Height:	967mm
Width (B):	1200mm



Deep Water Tooling AS  
Kyrkjebakken 26  
6856 Sogndal, NORWAY

info@dwt.no  
+47 977 60 576  
Org. Nr. 927 001 128

Deep Water Tooling AS  
Kyrkjebakken 26  
6856 Sogndal, NORWAY

info@dwt.no  
+47 977 60 576  
Org. Nr. 927 001 128



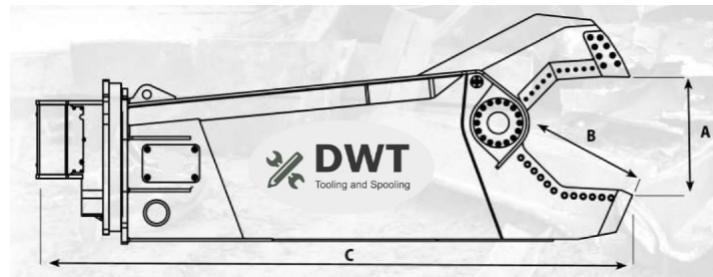
# DWT

## SHEARS

### 550

The DWT heavy duty shears can be used for a wide range of subsea projects such as decommissioning.

Together with DWT Water Hydraulic Pack you can use the shears with 520 bars of pressure (without any intensifiers), which gives you an enormous cutting force.



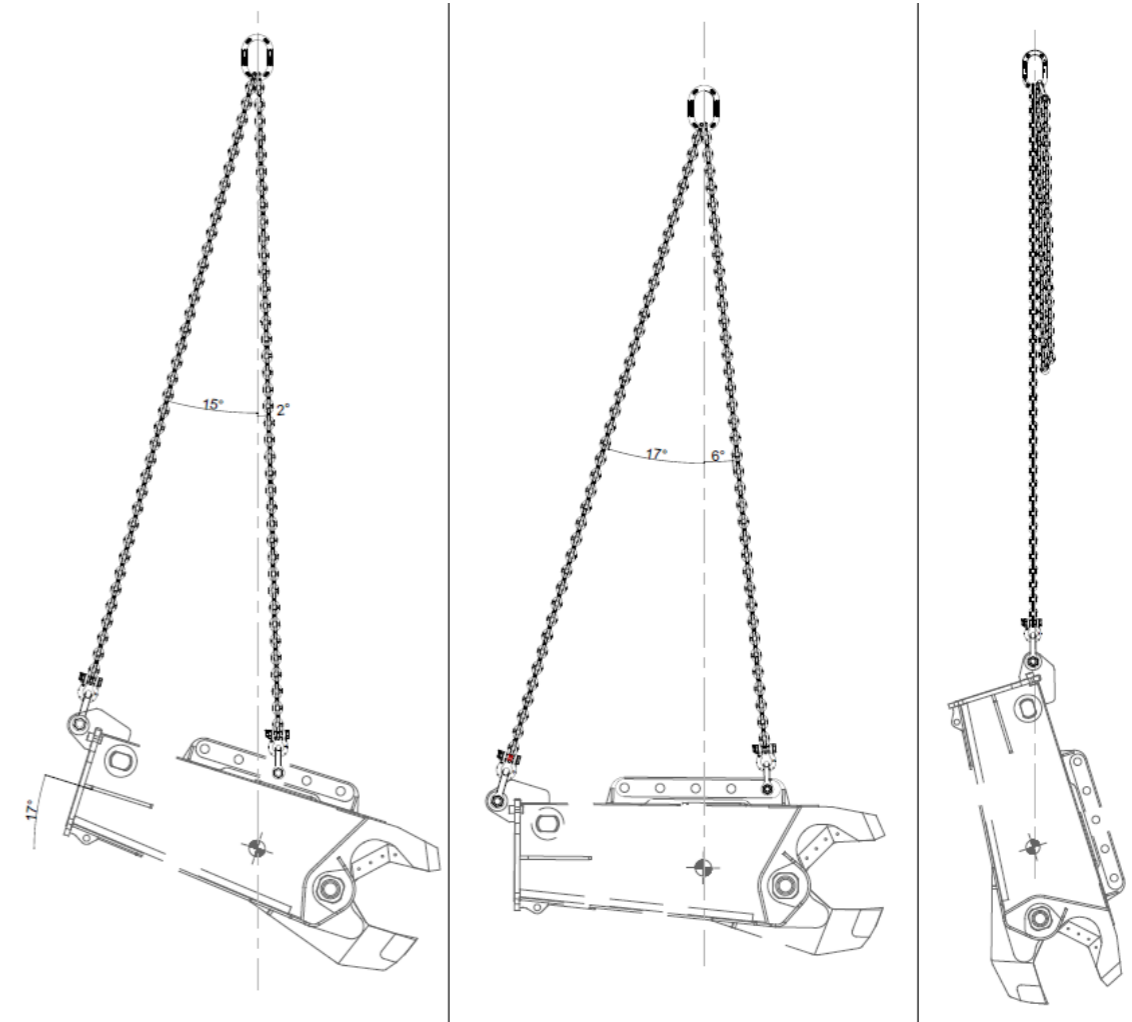
A: 760mm B: 780mm C: 3950mm



## Specifications

### General

Tool Weight:	5850 kg
Fluid:	Salt Water
Cylinders:	HD Water Gasket
Hydraulic Working Pressure:	350 Bar
Hydraulic Max Pressure:	520 Bar
Water flow:	275-375 l/min



Multiple opportunities of rigging the DWT SHEARS 550



Deep Water Tooling AS  
Kyrkjebakken 26  
6856 Sogndal, NORWAY

info@dwt.no  
+47 977 60 576  
Org. Nr. 927 001 128

Deep Water Tooling AS  
Kyrkjebakken 26  
6856 Sogndal, NORWAY

info@dwt.no  
+47 977 60 576  
Org. Nr. 927 001 128





# DWT MPS



The DWT Multi Purpose Skid is made for connection to most Work Class ROV's. The pin configuration can be fitted to fit All ROV's (Schilling & Kystdesign ROV systems as standard).

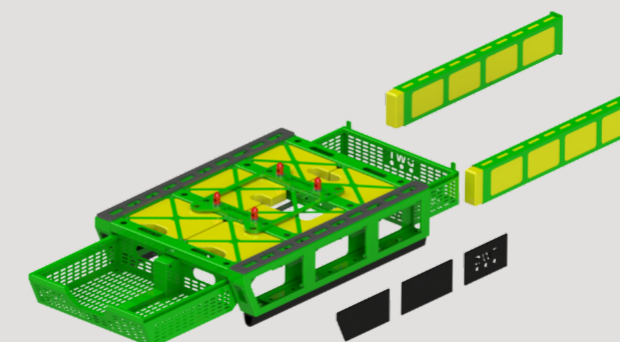
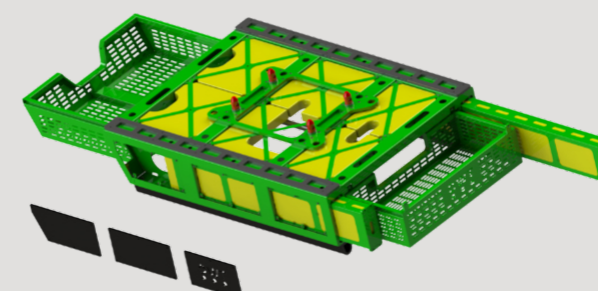
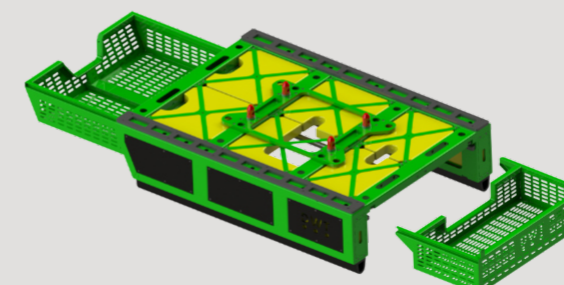
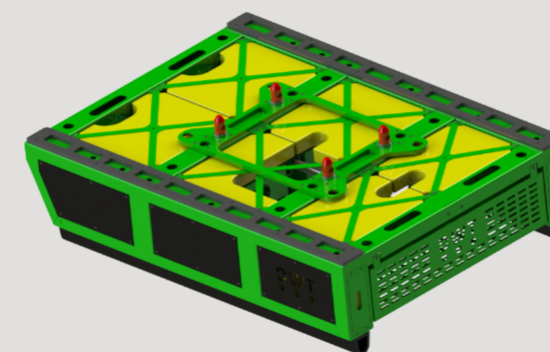
The Skid is constructed from a lightweight aluminum and have an optimal «skuff» configuration.

The skuffs can be fitted either one big or one at the front and one at the back for easy access for toolig/ survey equipment.

This configuration means that you do not need to work inside of the skid, just slide out the back skuff and get access to everything on deck.

Special buoyancy slides are fitted and made for adding or removing buoyancy as needed.

*Made by ROV personnel for ROV personnel.*



Deep Water Tooling AS  
Kyrkjebakken 26  
6856 Sogndal, NORWAY

info@dwt.no  
+47 977 60 576  
Org. Nr. 927 001 128

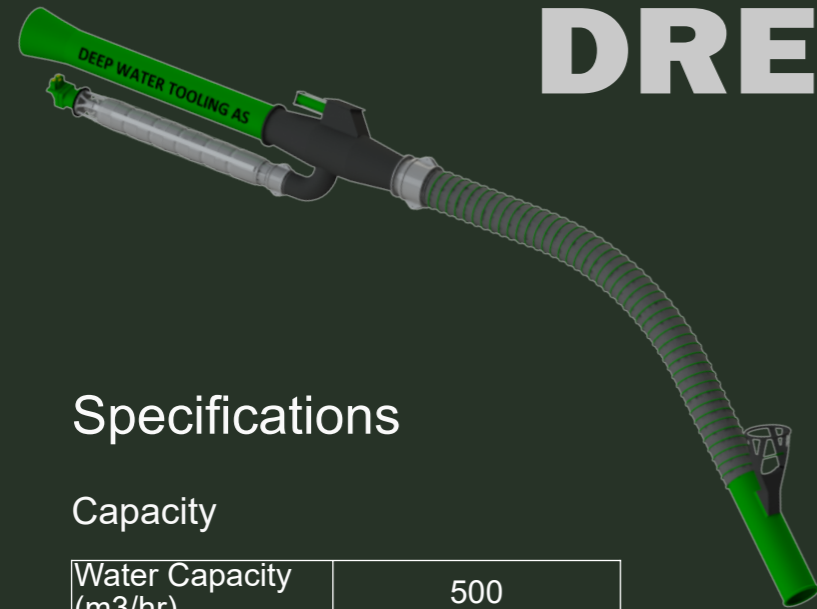
Deep Water Tooling AS  
Kyrkjebakken 26  
6856 Sogndal, NORWAY

info@dwt.no  
+47 977 60 576  
Org. Nr. 927 001 128





# DWT DREDGER



## Specifications

### Capacity

Water Capacity (m3/hr)	500
Max Capacity (m3/hr)	50
Max Particle Size (mm)	140
Recommended Average Particle Size (mm)	75
Ejector Inner Diameter (mm)	150
Hydraulic Requirement	70 l/min @ 200 bar



## Dredger Characteristics

- Designed for Subsea Excavation
- Rapid Mobilisation
- Easy Installation
- High Efficiency
- No Depth Limitations
- Easy Operation
- No Requirement for Additional Personnel
- Integral Backflush Valve to Clear Nozzle Blockage Without Recovering WROV



Deep Water Tooling AS  
Kyrkjebakken 26  
6856 Sogndal, NORWAY

info@dwt.no  
+47 977 60 576  
Org. Nr. 927 001 128

Deep Water Tooling AS  
Kyrkjebakken 26  
6856 Sogndal, NORWAY

info@dwt.no  
+47 977 60 576  
Org. Nr. 927 001 128





# DEEP WATER TOOLING AS

Tooling and spooling

*We look forward  
to hear from You!*

